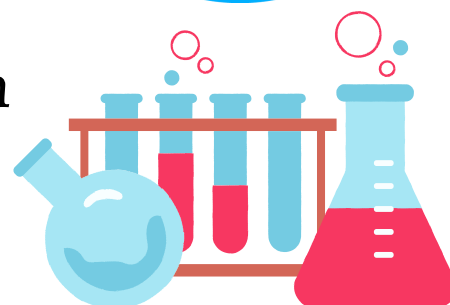
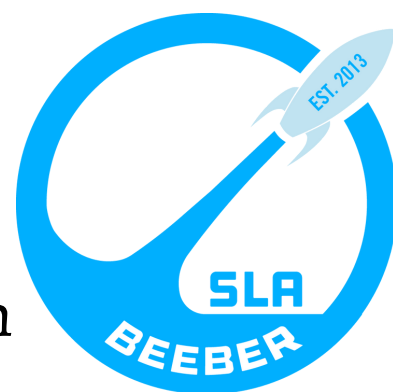
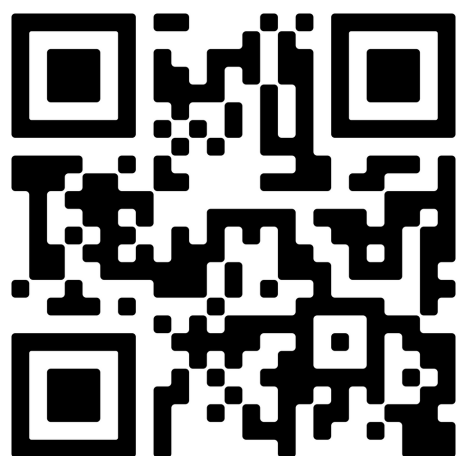


COME TO SLA@B MIDDLE SCHOOL!

- ➔ Offering Grades 5-8
- ➔ 4 Year Advisory Model
- ➔ Project-Based Academic Curriculum
- ➔ Project LYFT After-School Program
- ➔ NEW Science Labs
- ➔ ALL interested students must go through an interview and apply through the district.



Scan QR code to schedule by Nov. 26!



V
A
L
U
E
S

CORE

INQUIRE

RESEARCH

COLLABORATION

PRESENTATION

REFLECTION